



WE KEEP YOU MOVING FORWARD

KNOLL MIDIFIX II



We as KNOLL know that all the work in the field needs to be done in as little time as possible. You expect reliability and a certain performance of your machine to do the job.

With our MidiBalers we provide in your needs.
Versatile machines adding a value to your activities whenever you wish.

**We are proud on this,
because your story is our story.**



We keep you moving forward!

The KNOLL MidiFix II is our latest development in the field of MidiBalers. The MidiFix II combines the operations of baling and wrapping in one machine. In developing this new model, we asked ourselves the question, "what does a professional user expect from a KNOLL MidiBaler?"

By developing a new machine from this point of view, we have succeeded in offering a professional machine that scores on the basis of many highlights.

A MidiFix II consists, just like the regular MidiFix, of a bale chamber equipped with 14 symmetrical chamber rollers which guarantee an exceptionally high bale density and bale rotation. The MidiFix II is equipped with a newly developed wrapper which ensures a reliable and fast bale transfer. In combination with a fast wrapper equipped with a double wrapping arm, this ensures an unmatched capacity.

The MidiFix II is a machine for professional users and is therefore perfectly suitable for users working in contract work. It does not matter what kind of product is being processed, silage, hay or straw bales. The machine is very easy to operate and is fully automatic. Also in combination with the optional film binding this machine distinguishes itself in the market segment!



KNOLL MidiFix II

- Bale size: 85 cm. (width) x 90 cm. (Ø)
- Bale volume: 0,55 m³
- Bale weight: 75-150 kg.
- Fixed bale chamber with 14 heavy-duty chamber rollers
- Pick-up working width: 1.70 mtr.
- Infeeding rotor with 7 knives cutting system
- Capacity: 50-70 bales/hour



**POWERFUL, DECISIVE AND FAST.
FOR HIGHLY PROFESSIONAL USE!**

A COMBINATION FOR PROFESSIONALS, SIMPLY THE BEST!

KNOLL MidiBalers make expectations come true! Our machines combine the operations of baling and wrapping in one machine. This ensures an efficient and effective process that guarantees high reliability and capacity (number of bales/hour). This working method of KNOLL MidiBalers ensures that bales of the best quality can be produced due to direct air exclusion which ensures the best feed quality. In addition, this combined mode of operation ensures economic use of the machine by using only one tractor and operator.



Compact design

The robust but compact construction of a KNOLL MidiFix II allows the machine to be used in all conditions. The stable frame guarantees a long service life for the machine. The single-axle construction with large wheels makes the machine particularly maneuverable.

The low center of gravity ensures perfect crop pickup by the pickup and excellent maneuverability.

Due to the even weight distribution and the single-axle construction, the MidiFix II has excellent driving characteristics, even when distances need to be covered.

Pick-up for maximum crop intake

Making a good midi bale starts with proper intake of the base product. Exact and short cut forage is the basic requirement for producing quality silage. The pick-up of the KNOLL MidiFix II with 4 rows of tines ensures maximum intake capacity through its excellent ground adaptation.

The steered pick-up with a working width of 1.70 m is equipped with large augers on both sides which ensure an optimum material flow to the rotor, even with wide windrows. In front of the rotor is a mechanically driven crop roller. This ensures excellent compaction of the material and increases the feed capacity.



Rotor & cutting system

A quality product can only be delivered when the crop is being cut short and effectively. A 3-star rotor with high intake capacity is built into the feed system. With a diameter of 400mm, the rotor transports large, dry windrows as well as short windrows effectively into the bale chamber.

The rotor feed system of a MidiFix II is designed for optimal feed intake in all conditions. The cutting device is located at the bottom of the rotor. The cutting device is equipped with 7 cutting knives. Due to the very small distance between the rotor and the knives, the feed is cut precisely.



Film & net binding system

A KNOLL MidiFix II is equipped with a net binding system as standard. Optionally, the machine can be equipped with a film binding system. With film binding, net rolls can of course still be installed. The use of mantelfilm offers substantial advantages for improving silage quality.

With mantelfilm, the bales become more compact and are better protected by the film layers. Film and film provides an additional oxygen barrier. The bales can be opened and recycled more easily because the mantelfilm and wrapping film can be removed together as one waste product.

Optimal bale density

At the center of the machine is the bale chamber with a size of 85 cm. x 90 cm. The bale chamber is an important part of the machine. It consists of 14 heavy-duty roller presses which rotate on roller bearings. These rollers have a special profile in order to create the highest possible bale density. Directly behind the rotor is the special 'front roller', which ensures an optimal rotation of the bale - regardless of the type of crop being baled.

The door is equipped with mechanical hooks which keep the bale chamber closed during the feeding process and simultaneously ensure the highest possible bale density.



Wrapping of the bale

The KNOLL MidiFix II is equipped with a wrapping table which drives under the bale chamber at the start of the netting process. As soon as the bale is tied, it is transported to the wrapping position without ground contact. Direct transfer of the bale; fast, clean and without additional loading arm.

Moving the bale is easy, reliable and safe - even on sloping terrain. The bale transfer takes a few seconds, so that downtime is minimal.

The MidiFix II is equipped with a double wrapping arm with two 500 mm film stretch units. The automatic film control immediately stops wrapping when there is an empty roll of wrapping film or when the film tears. A user can also continue wrapping with one film roll after this and automatically double the number of wraps.

Film binding system for better preservation



A KNOLL MidiFix II can optionally be equipped with a film binding system. When this is present on the machine, it is also still possible to use net. Changing film or net is just changing a setting in the control system.

The use of mantel film offers proven benefits for improving silage quality:

1) Bale density

Bales become more compact and are better protected by the film layers. Also, the presence of mantel film provides an additional oxygen barrier.

2) One type of residual waste

Mantel- and wrapping film can be processed as one residual product after the bale is opened. This simplifies the opening and recycling of film.

For proper application, a net roll of 105 cm and a mantel film roll of 100 cm should be used. The mechanically adjustable braking force system ensures tightly wrapped bales with net or mantel film.

A midi bale fits through any door!

A midi bale has characteristics that make this type of bale particularly interesting for the end user. This type of bale is constantly increasing in popularity and has acquired its 'own' place in the market.



1) Low feed rate.

Also useful for the small or hobby farmer

2) Small bale size.

Less chance of heating and mold

3) Fits through any door.

Light weight and easy to move

4) Packaged airtight and dust-free.

Wrapped in wrapping film, long shelf life

5) Logistics.

Midi bales are easy to move and transport

A midi bale typically has a weight of 75 -150 kg, depending on the product being processed.

In proportion, one midi bale equals:

- 3 to 4 small square hay bales
- 1/3 large round bale



TECHNICAL DATA KNOLL MIDIFIX II

Dimensions & Weight	
Transport length	5.30 mtr.
Transport width	2.65 mtr.
Transport height	2.15 mtr.
Wheels	500/50 R17
Weight	3.025 kgs.
Brake system	N/A (brake system optional)
Required power	
Required tractor power	Min. 52 kW/ 90hp
Bale size & capacity	
Bale size (width x diameter)	85 cm. x Ø 90 cm.
Bale volume	0.55 m3
Bale weight	75-150 kg
Number of bales per hour	50-70
Pick-up	
Working width	1.70 mtr
Number of tine bars	4 (52 tines)
Feed rotor with cutting knives	Yes, incl. 7 cutting knives (mechanical operated)
Dropfloor	Yes (hydraulically operated)
Mounting & Drive system	
Attachment to tractor	a) Drawbar for lifting device, CAT. II b) Drawbar for lower / upper coupling
PTO	1-3/8" (6 splines) - 540 rpm.
Hydraulic system	
Hydraulic system	Open center hydraulics from tractor
Hydraulic connections	1 pressure connection 1/2" 1 pressure free return connection 3/4" Minimum 25 ltr/min flow rate
Load-sensing hydraulic system	Optional
Elektric system	
Elektric connections	12 volt DC & road lighting
Operator system	CrossControl 7" TFT touchscreen control (dust and water resistant)
Wrapping & Binding system	
Wrapping system	Double wrap arm with 500 mm film stretch-units
Binding system	Net binding / Film binding (optional)
Film break detection system	Yes, automatic for both binding & wrapping system
Extra storage of wrapping film	10 rolls
Additional storage mantelfilm/net	1 roll

KNOLL & AGRONIC

MOVING FORWARD TOGETHER, SUCCESS COMES NATURALLY

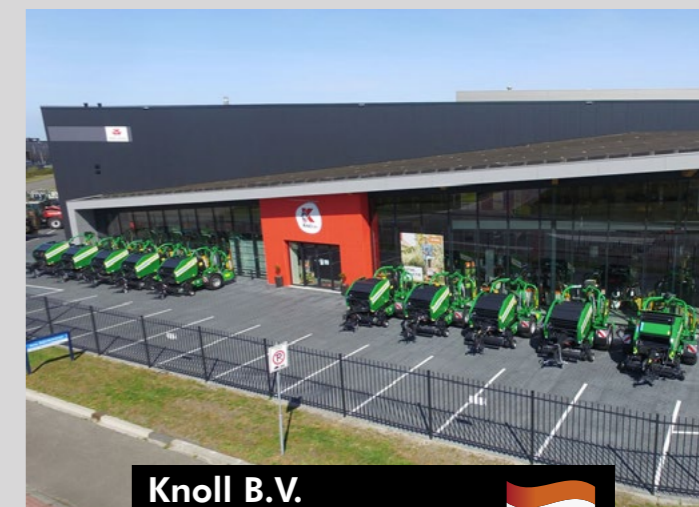
For more than 25 years, Knoll B.V. has cooperated with Agronic Oy of Finland. Agronic Oy is a producer of agricultural machinery. This cooperation started in 1997. Knoll B.V. imported bale wrappers from this Finnish company.

By intensively selling round balers and wrappers, Knoll B.V. decided in 2008 to launch its own machine on the market, using the name AGRONIC.

A good cooperation ensures perfect machines and satisfied customers!

After successful development of various machines, in 2021 it was mutually decided to start selling these machines also under the brand name KNOLL. The machines will also continue to be sold under the AGRONIC brand name in a number of countries.

A strong cooperation of more than 25 years brings out the best in us. Together we are successful in the development of durable and reliable machines that create added value for our customers! A good cooperation ensures perfect machines and satisfied customers!



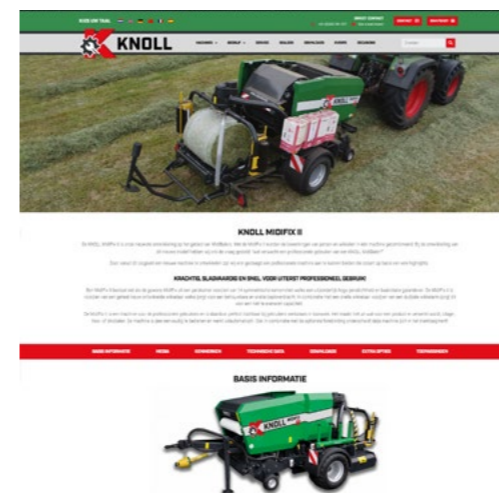
Knoll B.V.
Staphorst, Holland



Agronic Oy
Haapavesi, Finland



WEBSITE KNOLL-BALERS.COM



Would you like more information, photos and videos of the KNOLL MidiFix II?

Then take a look at our website!

www.knoll-balers.com

Or scan the QR code below




CONTACT





Sales office:

Knoll - Baling & Wrapping
Achthoevenweg 40
7951 SK STAPHORST
NETHERLANDS

Contact details:

 (+31) 0522 - 29 13 77

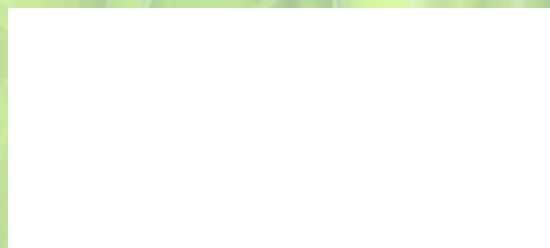
 sales@knoll-balers.com

 www.knoll-balers.com

You also find us on:



Your **KNOLL** quality partner:



Knoll - Baling & Wrapping
is part of Knoll B.V.

