



WE KEEP YOU MOVING FORWARD

KNOLL MULTIBALER XL



www.knoll-balers.com

We as KNOLL know that all the work in the field needs to be done in as little time as possible. You expect reliability and a certain performance of your machine to do the job.

With our MultiBalers we provide in your needs.
Versatile machines adding a value to your activities whenever you wish.

**We are proud on this,
because your story is our story.**

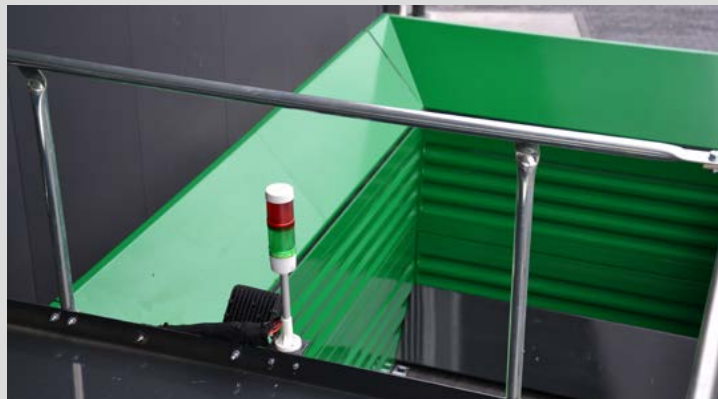


Quality for green fields all over the world!

INTRODUCTION OF THE MULTIBALER XL

The KNOLL MultiBaler XL is multifunctional due to its robust construction. This multifunctionality makes the machine the best all-rounder of its kind. KNOLL MultiBalers work worldwide to deliver round bales of the best quality and highest performance.

On the road to quality feed with KNOLL!



The development

In addition to the existing KNOLL MultiBalers (820/1220), the KNOLL MultiBaler XL is an entirely new development. We went back to the drawing board and developed a machine that is unique. Building on both stationary and mobile use, this MultiBaler XL offers the ability to process a variety of materials into round bales.

It is important for us to receive feedback from you, the customer, to challenge us to develop machines that meet the highest standards. From this process, for the development of the MultiBaler XL need for comfort, ease of use, excellent reliability, intuitive and easy operation, 100% connectivity and the ability to work with the most demanding machines.



The result:

**A KNOLL MultiBaler for
a new era**



KNOLL MultiBaler XL

- Bale size: 100–115 cm. (Ø) x 120 cm. (width)
- Bale volume: 0,95 – 1,25 m³
- Bale weight: 500–1350 kg (depending on material)
- Bunker volume: 8,00 m³
- Bale chamber equipped with 17 chamber rollers, 2 chamber belts and durable slide bearings
- Capacity: 50–60 bales/hour
- Hydraulic pressure control system for bale density
- Automatic film break detection system
- Binding system for mantelfilm or net
- Special feed rotors for optimal control of the crop flow



UNIQUE AND VERSATILE, THE MOST EFFICIENT OF ITS KIND!

The KNOLL MultiBaler XL is unique. The only machine that can work both stationary and mobile. Due to the design of the machine it is not necessary to change the working mode of the machine. Very easy and you can get straight to work.

This feature provides versatility and more possibilities to use the machine effectively, with ultimately a better result..... and satisfied users!

Stationary use

Loading with any kind of loading equipment

The spacious feed bunker can be loaded in a versatile way using various machines. For example, a tractor with a front loader, wheel loader, crane or any other loading solution.

In addition, the feed bunker is equipped with side panels (both left and right) that can be folded down to reduce the height and facilitate loading, even with smaller machines.



KNOLL Dropbunker for loading baler direct from silage wagon

When loading material directly from a silage wagon, the "KNOLL Dropbunker" offers the solution. This makes the use of the MultiBaler XL even more versatile. The drop bunker can of course also be used in a fixed stationary position! This drop bunker with a capacity of 3.50m³ is hydraulically driven and the feed speed can be perfectly adjusted for each type of material by means of a speed control valve. In this way, material from the field can be stationary processed into round bales in a short time.

Mobile use

Unique combination, versatile mobility!

The KNOLL MultiBaler XL can also be used mobile in a very efficient way. The combination in the field can be used with:

1. Directly in combination with self propelled chopper (PTO driven)
2. Driving next to the chopper, driven and pulled by a tractor
3. In combination with a tractor fitted with a front-mounted forage harvester



Processing different types of grass directly in the field

The KNOLL MultiBaler XL answers a frequently asked question. Is it possible to process chopped grass into bales? YES!

The KNOLL MultiBaler XL is the first machine to make it possible to process chopped round bales directly on the field. The MultiBaler XL was developed from the idea that it should be possible to process different chopped/shredded materials into bales. A variety of grass types can be baled, e.g. grass, alfalfa, fibre hemp, grain, GPS, etc.



8,00 m³ - large infeeding bunker

The machine's feed bunker has a volume of 8.00 m³. The bunker is designed so that it can be loaded with any type of machine. For example a tractor with a front loader, wheel loader, crane or any other loading solution.

The bunker is equipped with side panels that can be folded down to facilitate loading.

Durable bale chamber system

The heart of the MultiBaler XL consists of a bale chamber that is fitted with 17 bale chamber rollers in combination with 2 bale chamber belts.

This set-up enables a wide variety of short materials to be processed to the best possible compacted round bales! The wear-resistant steel of the bale chamber enables long-term operation without maintenance.



Film & Net Binding system

The strength of a good and effective operation usually lies in its simplicity. We have succeeded in equipping the KNOLL MultiBaler XL with a very simple working tying system. This system can be used for both mantel and net and ensures a neat finish of the pressed bale at all times, before it is wrapped.

IQAN 10" TFT control system

The MultiBaler XL is equipped with a durable and robust control system. The machine functions and the automatic work process are displayed by intuitive graphics on a 10" colour touch screen monitor. The symbols and graphics ensure clear display and operation, eliminating "language barriers."

Through Rimote® the machine is always "connected" and globally accessible for data exchange.



How does the MultiBaler XL work?

1. Loading and feeding the material

The (chopped) material can be loaded from above into the feed bunker. This can be done either by driving the harvester or by using a tractor or wheel loader. The feed bunker of the KNOLL MultiBaler XL has a volume of 8.00m³. In automatic working mode, the material is moved from the bunker to the chamber feed conveyor. From here the bale chamber is filled from the top.

Automatic speed control of the bottom chain in combination with the feed conveyor always ensures most optimal material feeding. In addition, the KNOLL MultiBaler XL is equipped with a small auger in the feed bunker to ensure a good distribution of the material on the feed conveyor.

The feed conveyor ensures efficient filling of the bale chamber from above. The bunker is also equipped with a special large dosing roller to regulate the crop flow, e.g. for long materials.

2. Forming and compacting into round bales

The heart of the machine is the bale chamber where the loose material is being formed into a round bale. The bale chamber of the KNOLL MultiBaler XL was developed on the basis of many years of application in industrial use. This has resulted in the best bale chamber of its kind with a guaranteed long life span and minimum wear.

The MultiBaler XL is equipped with an adjustable hydraulic pressure system. This allows the desired baling pressure to be set for each type of material, for bales of the best quality and shape. The bale chamber is basically equipped with 17 bale chamber rolls in combination with two "Power-Grip 4" bale chamber belts. This combination of rollers & belts makes it possible to process many types of material with minimum losses.

3. Binding the bale with net/ mantelfilm

The MultiBaler XL is equipped with a binding system where both net and mantelfilm can be used. The number of layers of film or net that are applied depends on the type of material and the (bale) quality that the user wishes to obtain.

The feeding, binding and cutting of the net/film is performed step by step in the automatic working mode. In addition, this system is equipped with external "keypads" that make it easy to operate and (re) start the binding system when a new roll is installed.

4. Recycling of small material losses

Material losses are reduced to a minimum by applying a return system under the entire length of the chassis of the KNOLL MultiBaler XL. Small material losses always occur when processing shredded or cropped products. These "crumb losses" are recycled in the machine's system by a continuously rotating return conveyor.

At the front of the return system, the material is collected and transported by horizontal augers (also applicable for long materials) to the return conveyor. From here the material is fed back into the bale chamber to form a new bale.

5. Wrapping with automatic film control

The wrapping table moves forwards and backwards through a guide rail. From the bale chamber the bale is rapidly transported from the loading position to the wrapping position.

The wrapper is equipped with a wrapping arm with two 750 mm film-stretch units. Here the bales are quickly and carefully provided with the correct number of layers of wrapping film after baling for good sealing and preservation of the bale.

For optimum control, the wrapper is equipped with automatic film break detection. As soon as a film roll is empty or the film tears, the wrapper stops or continues wrapping with one reel and the speed is automatically reduced to ensure that the film overlap always remains 50%.

The carefully developed film cutters always ensure accurate cutting and retention of the film.



TECHNICAL DATA OF THE MULTIBALER XL

Dimensions & Weight	
Transport length	11.37 mtr.
Transport width	2.97 mtr.
Transport height	3.86 mtr.
Wheels	560/60 R22.5
Weight	10.850 kgs.
Brake system	Air brake system (double line) for max. 40 km/h
Required power	
Required tractor power	Min. 135hp / 100kW
Bale size & capacity	
Bale size (width x diameter)	120 cm. x Ø 100–115 cm.
Bale volume	1.25 m3
Bale weight	500–1350 kg
Feed hopper volume	8.00 m3
Number of bales per hour	50–60
Attachment & Drive system	
Attachment to tractor	Rotatable flange eye / K80
PTO	1-3/8" (6 splines) – 1000 RPM
Hydraulic system	
Hydraulic system	Danfoss on-board load sensing hydraulic system with oil cooler
Hydraulic connections	No connections required
Elektric system	
Electrical connections	12 volt DC & road lighting
Operator system	IQAN 10" TFT touch screen (dust and water resistant)
Wrapping & Binding system	
Wrapping system	Double wrap arm with 750 mm film stretch units
Binding system	Filmbinding and netbinding
Film break detection system	Yes, automatic for both binding & wrapping system
Extra storage wrapping film	12 rolls
Extra storage mantelfilm/net	5 rolls



KNOLL & AGRONIC MOVING FORWARD TOGETHER, SUCCESS COMES NATURALLY

For more than 25 years, Knoll B.V. has cooperated with Agronic Oy of Finland. Agronic Oy is a producer of agricultural machinery. This cooperation started in 1997. Knoll B.V. imported bale wrappers from this Finnish company.

By intensively selling round balers and wrappers, Knoll B.V. decided in 2008 to launch its own machine on the market, using the name AGRONIC.

A good cooperation ensures perfect machines and satisfied customers!

After successful development of various machines, in 2021 it was mutually decided to start selling these machines also under the brand name KNOLL. The machines will also continue to be sold under the AGRONIC brand name in a number of countries.

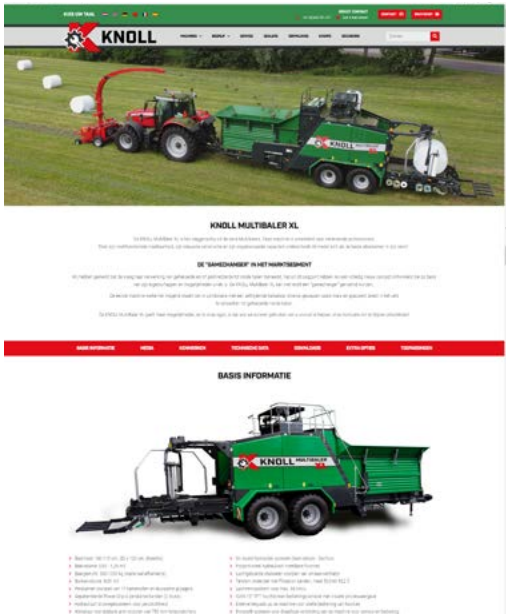
A strong cooperation of more than 25 years brings out the best in us. Together we are successful in the development of durable and reliable machines that create added value for our customers! A good cooperation ensures perfect machines and satisfied customers!



Knoll B.V.
Staphorst, Holland



Agronic Oy
Haäpavesi, Finland



WEBSITE KNOLL-BALERS.COM

Would you like more information, photos and videos of the KNOLL MultiBaler XL?

Then take a look at our website!



www.knoll-balers.com

Or scan the QR code



CONTACT



Sales office:

Knoll - Baling & Wrapping
Achthoevenweg 40
7951 SK STAPHORST
NETHERLANDS

Contact details:

☎ (+31) 0522 - 29 13 77

✉ sales@knoll-balers.com

🌐 www.knoll-balers.com

You also find us on:



Your **KNOLL** quality partner:



Knoll - Baling & Wrapping
is part of Knoll B.V.

