




We keep you moving forward



**MultiBaler 1220**  
Baler-wrapper combination



We as KNOLL know that all the work in the field needs to be done in as little time as possible. You expect reliability and a certain performance of your machine to do the job.

With our MultiBalers we provide in your needs. Versatile machines adding a value to your activities whenever you wish.

**We are proud  
on this,  
because your story  
is our story.**

## About us

Knoll B.V. has been active in various developments in the field of balers and wrappers over the past decades, both as an importer and manufacturer. In 2019, the company moved into a new building with a showroom and large workshop on the De Esch industrial estate in Staphorst.

### **A good partnership ensures perfect machines and satisfied customers.**

Knoll B.V. has been working with Agronic Oy from Finland, a manufacturer of agricultural machinery, for many years. This collaboration began in 1997. Knoll B.V. imported bale wrappers from this Finnish company. Due to its intensive involvement in the sale of round balers and wrappers, Knoll B.V. decided in 2008 to launch its own machine on the market, using the name AGRONIC.

After the successful development of various machines, it was decided in 2021 to sell these machines under the KNOLL brand name.

The strong partnership with Agronic has brought out the best in us for years. Together, we are successful in developing sustainable and reliable machines that create added value for our customers! A good partnership ensures perfect machines and satisfied customers!

*Team Knoll B.V.*

## The versatile all-rounder

The KNOLL MultiBaler 1220 is a versatile MultiBaler, developed for the baling & wrapping of various (fibre-rich) materials. The MultiBaler 1220 provides a high efficiency and is the suitable machine for any professional. This machine makes the packaging of silage and other products simple, easy and extremely efficient!



KNOLL MULTIBALER 1220  
**ROBUST, EFFICIENT  
& RELIABLE**

The MultiBaler 1220 is a machine that can be used in a wide range of applications, both stationary and mobile and for small and large jobs.

Because of the round bale size that is produced with the KNOLL MultiBaler 1220, this machine is suitable for various users and circumstances and for deployment on own farms or for commercial use.

With these features, the KNOLL MultiBaler 1220 is a robust, efficient and reliable choice for anyone looking for high performance, flexibility and cost efficiency.

## Features of the KNOLL MultiBaler 1220



- Bale size 100 cm (width) x 100–120 cm (Ø)
- Bale volume 0,80–1,10 m<sup>3</sup>
- Bale weight 500–900 kg (material dependent)
- Bunker volume 4,00 m<sup>3</sup>
- On-board hydraulic system with oil cooler
- Capacity 40–45 bales per hour



### Reliable operating system

The machine is operationally controlled by a fully automatic control system. This system has been developed by our own software engineers, enabling us to optimise it for all applications.

The multilingual control programme makes it possible for almost anyone to work with this machine easily.



### 'On-board' hydraulic system

KNOLL MultiBalers are standard equipped with their own hydraulic system based on two oil pumps. An oil cooling system is also included.

This system enables easy drive of the machines with only a 540 rpm PTO drive.



### Film- & Netbinding system

KNOLL MultiBalers are standard equipped with a binding system where both net and mantelfilm can be used.

The choice of net or mantelfilm depends on the type of material or the user's requirements.

In both cases the binding system of the MultiBaler 1220 ensures a neat finish of the pressed bale, before it is wrapped.

## Cost-effective working with high capacity!

The MultiBalers from KNOLL are universally usable due to their robust construction. This multifunctionality makes the machines all-rounders for everyone. KNOLL MultiBalers work worldwide to provide customers with the best products and performance!

The KNOLL MultiBaler 1220 is a machine that guarantees a high capacity and reliability (number of bales/hour). Sophisticated technology and an efficient work process ensure the highest possible output.

Being an owner of a machine means paying attention to the Total Cost of Ownership. KNOLL machines are equipped with high quality parts and require little maintenance, which results in a long service life and a low cost per bale.

### Direct drive by 'KNOLL Electro Powerpack'

A KNOLL MultiBaler 1220 can optionally be powered by a KNOLL Electro Powerpack. This is a perfect solution for stationary use at fixed (indoor) locations.

This "electric drive" saves space, produces no exhaust fumes and ensures cost-effective use of the machine.

A power pack is supplied complete supplied with housing, electric motor and switch box.



### PDH-10 additive system

The fully automatic PDH-10 system ensures the best quality silage. This system was developed in-house. The pump is equipped with a stainless steel pump unit that is resistant to various types of acids and additives.

Any type of additive can be added automatically during automatic operation of the machine. The operation and settings of this PDH-10 system are integrated into the machine's software.



### Stationary & mobile use

KNOLL MultiBalers can be used functionally. Both mobile, directly in the field and stationary at a fixed location.

It is even possible to use the machine in one operation by combining it with a front- or trailed harvester.

For stationary use, a 'KNOLL Dropbunker' can be a useful tool to load the machine with a silage wagon

### Direct drive by 'KNOLL Diesel Powerpack'

A KNOLL MultiBaler 820 can be optionally equipped with a "Diesel Powerpack". This is a 3-cylinder diesel engine, mounted on the machine in a "silent pack". This option makes it possible to power the "stand-alone" machine without using a tractor.

The tractor can then be used, for example, to load the machine or move the wrapped bales.



### 4,00 m3 Infeeding bunker

A KNOLL MultiBaler 1220 is equipped with a compact feed bunker with a capacity of 4.00 m3.

A bottom chain with conveyer bars moves the material towards the bale chamber. This 'horizontal' method of feeding makes it possible to process many types of material without problems.

Loading the feed hopper is possible in various ways.

# ■ How does the MultiBaler 1220 work?

## 1. Loading and feeding the material

Loose material should be loaded from above into the bunker of the machine. This can be done using a tractor + front loader, crane or wheel loader.

The feed bunker can also be loaded from the ground or in combination with a silage wagon using the optional "KNOLL Dropbunker". The bunker is equipped with movable side plates, which reduces the height for loading.

After loading, the material is transported to the bale chamber fully automatically by means of a bottom chain

The bottom chain automatically pauses when too much material is fed in and thus adjusts itself to the type of material.

Shortly before the bale chamber, two dosing rollers ensure a regular distribution and flow of material towards the bale chamber.



## 2. Compacting into round bales

The material is compacted in the bale chamber resulting in a volume reduction of up to 50–70%. This depends on the type of crop or material and the dry matter content.

The bale chamber of the MultiBaler 1220 is fitted with two heavy-duty drive chains with 107 tight bars between them. This system together ensures a closed bale chamber.

Each tight bar exerts pressure and traction on the material during baling, ensuring shape-retaining bales.

## 3. Bale wrapping/ net wrapping

After compacting the material into a round bale, it is important that the bale is properly tied with net or wrap before it leaves the baling chamber.

Sublime film or net binding ensures perfectly shaped bales. The owner of a MultiBaler 1220 can choose whether to use net or wrap for this process.

The "film & film" principle is based on a number of layers of mantelfilm in combination with wrapping film that is tied around the bale and guarantees a high bale density.

## 4. Integrated return system

KNOLL MultiBalers are equipped with an integrated return system for recycling "crumb losses".

During the processing of (short) materials, small losses always occur. With the help of the return system, no product is lost.

The return system consists of a construction that runs along the entire length of the bale chamber and wrapper. From here, the losses are transported to the front of the machine by means of a floor chain.

## 5. Automatic wrapping with film control

KNOLL MultiBalers are equipped with an ingenious wrapping system. When the bale is ready in the bale chamber, it is automatically transferred to the wrapper.

The wrapper is equipped with a wrapping arm with two film stretchers for 750 mm film rolls and two cut-and-hold cutting systems for the wrapping film.

During the bale wrapping the process is monitored by the film control system. When a film roll is empty or when it breaks, the system reacts automatically.

# TECHNICAL DATA OF THE KNOLL MULTIBALER 1220

Dimensions & Weight	
Transport length	8.90 mtr.
Transport width	2.87 mtr.
Transport height	3.10 mtr.
Feed hopper volume	4.00 m <sup>3</sup>
Wheels	500/50-17
Weight	6.800 kgs.
Brake system	Air brake system (optional)
Required power	
Required tractor power	Min. 95hp / 70kW
Bale size & capacity	
Bale size (width x diameter)	100 cm x Ø 100-120 cm
Bale volume	0.48 m <sup>3</sup> – 0.54 m <sup>3</sup>
Bale weight	450–800 kg
Number of bales per hour	40–45
Attachment & Drive system	
Attachment to tractor	Rotatable flange eye / K80
PTO	1-3/8" (6 splines) – 540 rpm.
Hydraulic system	
Hydraulic system	"On-board" hydraulic system with oil cooler
Hydraulic connections	No connections necessary

Elektric system	
Elektric connections	12 volt DC connections & road lighting
Operator system	Electronic control unit (dust- and water resistant)
Wrapping & Binding system	
Wrapping system	Double wrap arm with 750 mm film stretch units
Binding system	Filmbinding and Netbinding
Filmbreak detection system	Yes, automatic for both binding & wrap system
Extra storage of wrapping film	12 rolls
Extra storage for mantelfilm/net	1 rolls



## What do customers say about the KNOLL MultiBaler 1220?



**Geert Damkot**  
Winterswijk - Kotten  
The Netherlands

Geert Damkot has been a customer of Knoll B.V. since 2010 and specialises in pressing maize bales into midi and multi-bales. In addition to a KNOLL MidiFix and a KNOLL MultiBaler 820, he also has two KNOLL MultiBalers 1220 at his disposal.

### Geert explains:

*"I am very satisfied with the KNOLL MultiBalers 1220, which I can use both stationary and mobile with the New Holland FX60 Chopper in front. We have customers in the Netherlands and Germany who, like us, are very satisfied with the 100x120 cm bales."*

*"With our MultiBalers, we can press bales ranging from 350-750 kg (depending on dry matter content) in various sizes. This allows us to respond flexibly to market demand. We are also very satisfied with the service provided by Knoll B.V., who are always there for us in the event of any malfunctions."*



# ■ Applications

The processing of chopped and shredded crops and materials into high-density round bales is what the KNOLL MultiBalers excel at! Our customers use our MultiBalers to bale a wide range of different materials.



Maize/Corn Silage



Chopped grass



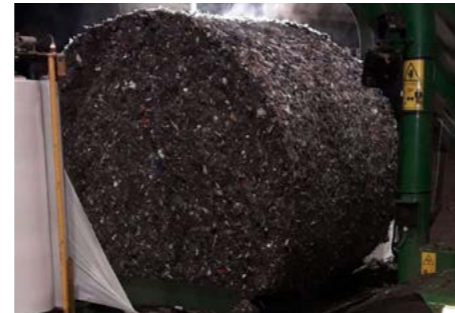
GPS ( whole plant silage )



TMR ( Total Mixed Ratio )



CCM ( corn cob scrap )



RDF ( waste )

**Examples of other materials that can be baled with a KNOLL MultiBaler 820**  
**Alfalfa | Lucerne | Dried manure | Cereals | Wood chips | Sugar beet pulp | Peat**  
**Hemp | Cotton | Plastic**



[www.knoll-balers.com](http://www.knoll-balers.com)



## Global service network and experienced users

Even the best machines cannot do without service! KNOLL Midi and MultiBalers are active in more than 80 countries and our service team is there for all customers. Our customers can rely on our commitment so they can expect the maximum performance from their machine. Service is a high priority at KNOLL. If you are already a customer of ours, you undoubtedly know this. We are not satisfied until you are. Service is not a hollow concept with us, but consists of three components that you can rely on.



Machines are provided with expertly compiled user manuals and parts information



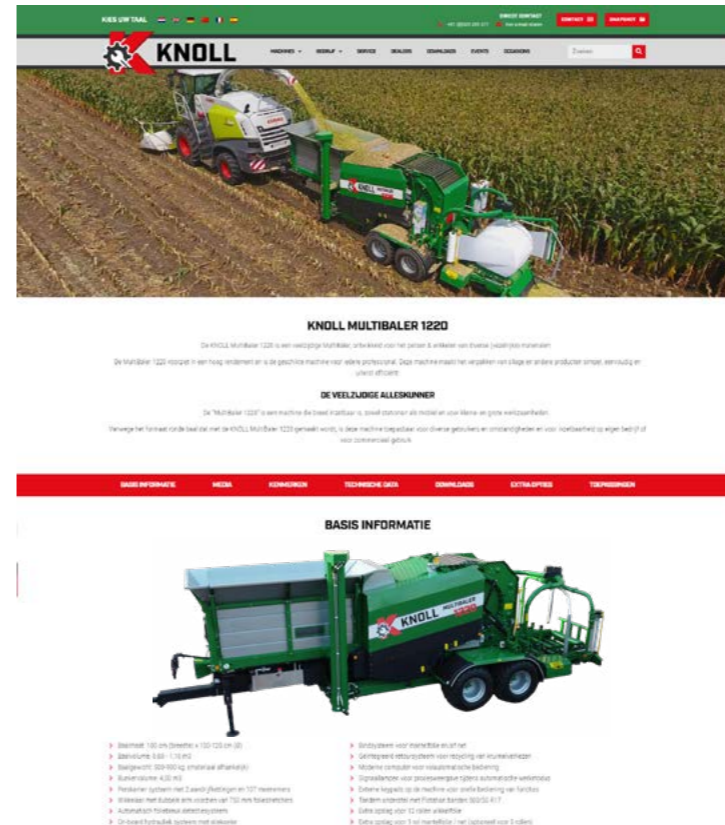
Original spare parts of high quality. Everything in stock, fast delivery.



Our goal is to help you as quickly as possible. We can be reached through various communication channels.

[www.knoll-balers.com](http://www.knoll-balers.com)

# We keep you moving forward



## CHECK OUT OUR YOUTUBE CHANNEL



On our YouTube channel KnollBV, you will find various videos of the KNOLL MultiBaler 1220 in action.

## WEBSITE KNOLL-BALERS.COM

Would you like more information, photos and videos of the KNOLL MultiBaler 1220?



Then take a look at our website!

[www.knoll-balers.com](http://www.knoll-balers.com)

Want to go directly to the website? Scan the QR code!



YouTube



Want to go straight to the videos? Scan the QR code!

**We operate globally in more than 80 countries with our Midi and MultiBalers.**



- Klanten
- Dealers



## We are here to assist you!

Baling and wrapping often takes place during short periods when the weather permits. Providing accurate service during downtime is a must. That means more than just repairing malfunctions. We provide objective advice on whether to repair or replace parts and also provide information about the latest techniques and developments in the field of baling and wrapping.



KNOLL MidiFix II

Our product range



**KNOLL** Midi- en MultiBalers



KNOLL MultiBaler 820



KNOLL MultiBaler 1220



KNOLL MultiBaler XL



### **Sales office:**

Knoll - Baling & Wrapping  
Achthoevenweg 40  
7951 SK STAPHORST  
NETHERLANDS

### **Contact details:**

 (+31) 0522 - 29 13 77

 [sales@knoll-balers.com](mailto:sales@knoll-balers.com)

 [www.knoll-balers.com](http://www.knoll-balers.com)

### **You can also find us on:**



Knoll - Baling & Wrapping  
is part of Knoll B.V.

